

# Longleaf Pine in East Texas, 2019

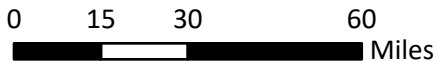
## Percent Basal Area of Longleaf Pine

- less than 10% (17)
- 10% to 19% (8)
- 20% to 29% (7)
- 30% to 39% (4)
- 40% or more (12)

FIA plots in East Texas from 2019 inventory (inventory years 2015-2019)

Plots shown have at least one occurrence of longleaf pine on timberland

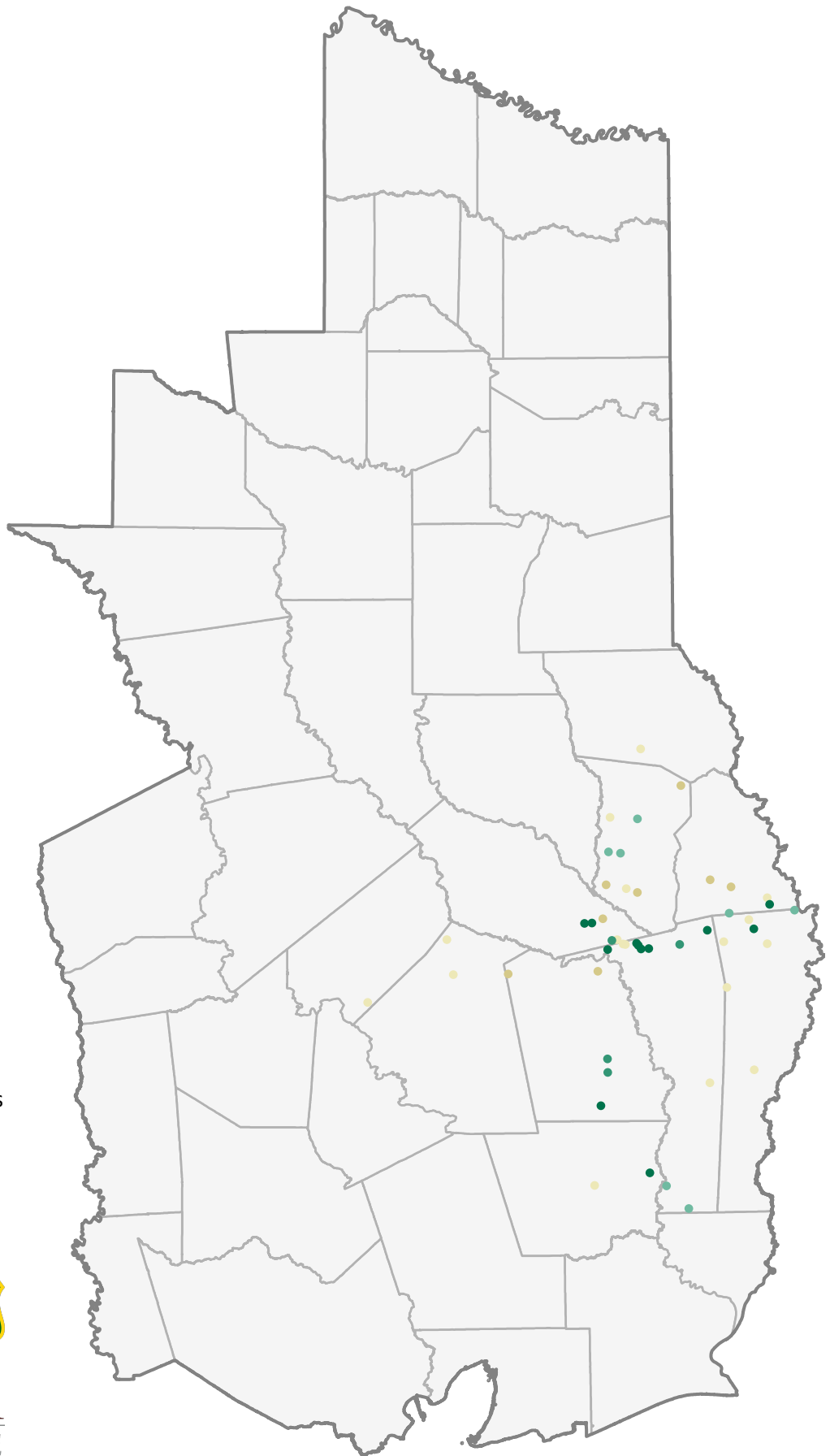
Basal area is of live trees at least 5 inches in diameter



Forest Inventory & Analysis is a state and federal partnership to inventory forestlands in Texas

Map by Rebekah Zehnder  
([rzehnder@tfs.tamu.edu](mailto:rzehnder@tfs.tamu.edu))  
November 13, 2020

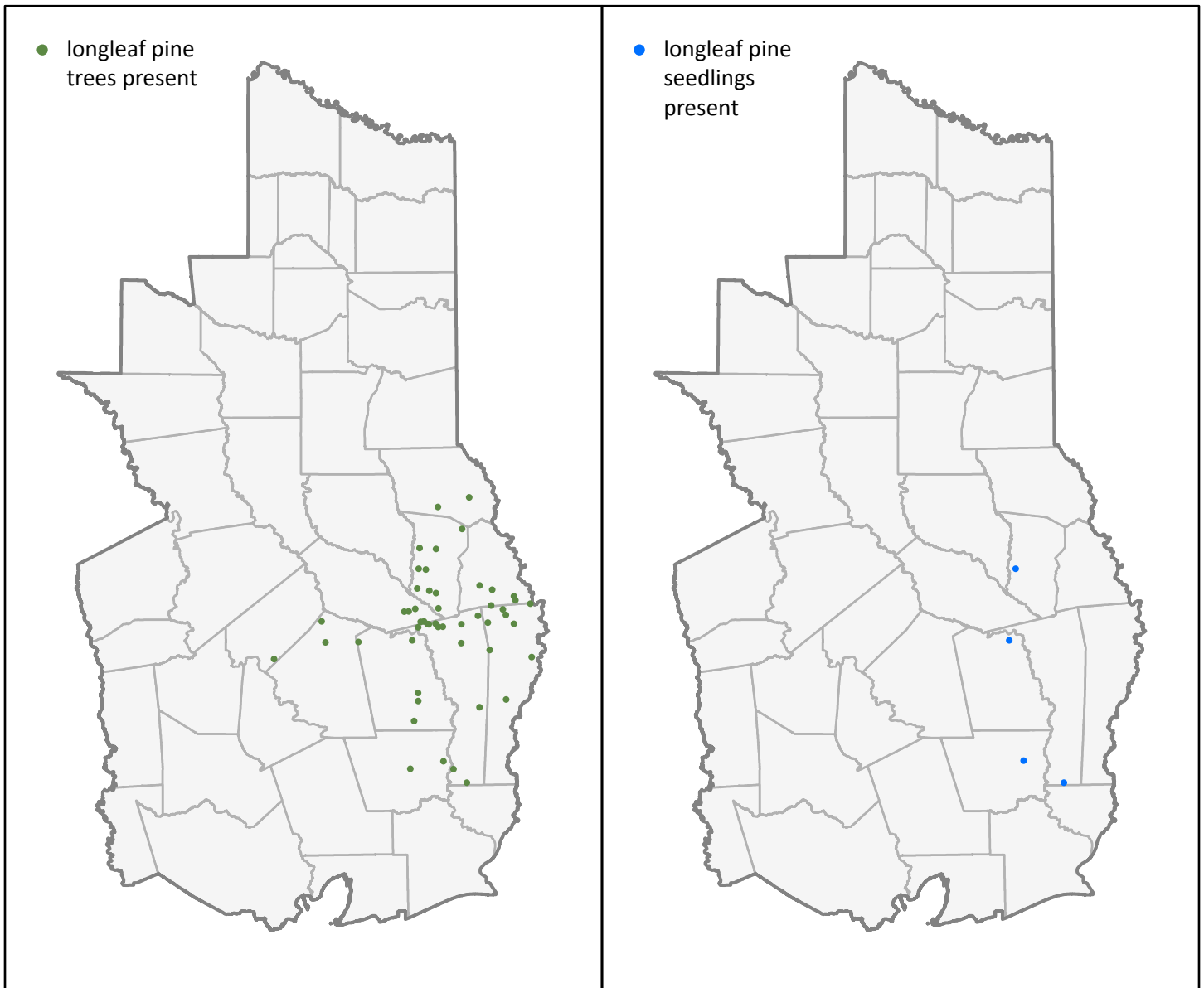
Data downloaded from FIA DataMart  
(<http://www.fia.fs.fed.us/tools-data>)  
Downloaded on September 1, 2020



# Longleaf Pine in East Texas, 2019

## Trees

## Seedlings



0 25 50 100 Miles



FIA plots in East Texas from 2019 inventory (inventory years 2015-2019)

Presence indicates at least one occurrence of longleaf pine on timberland

Trees are at least 1 inch in diameter; seedlings are less than 1 inch in diameter

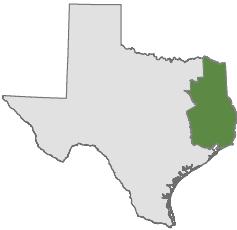
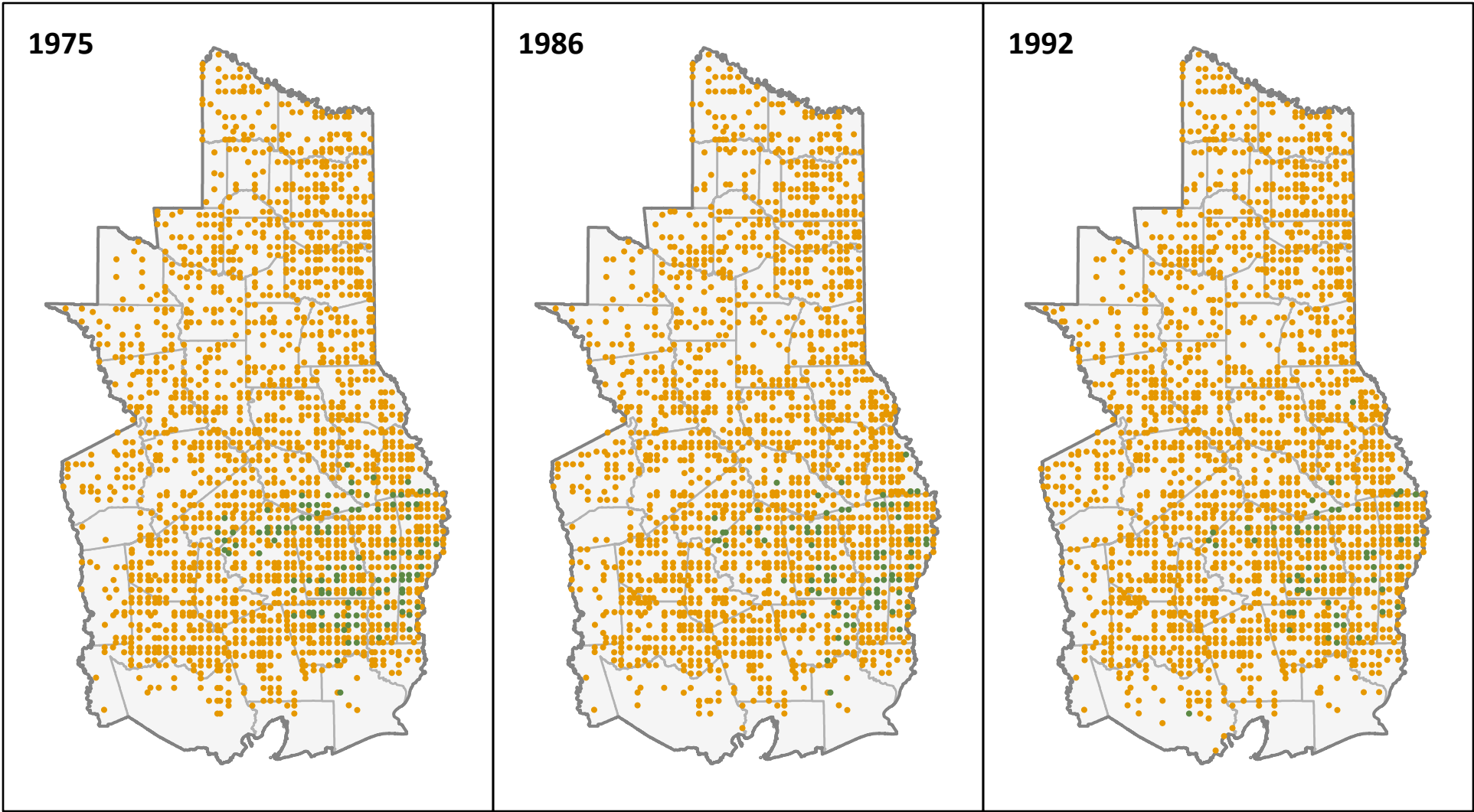
Forest Inventory & Analysis is a state and federal partnership to inventory forestlands in Texas

Map by Rebekah Zehnder  
([rzehnder@tfs.tamu.edu](mailto:rzehnder@tfs.tamu.edu))  
November 13, 2020

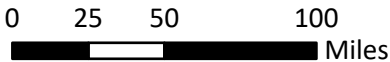
Data downloaded from FIA DataMart  
(<http://www.fia.fs.fed.us/tools-data>)  
Downloaded on September 1, 2020



# Longleaf Pine in East Texas, 1975 to 1992



- longleaf pine trees absent
- longleaf pine trees present



FIA plots in East Texas from 1975, 1986, and 1992 inventories  
 Presence indicates at least one longleaf pine tree on timberland  
 Trees are at least 1 inch in diameter

Forest Inventory & Analysis is a state and federal partnership to inventory forestlands in Texas

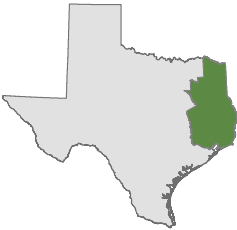
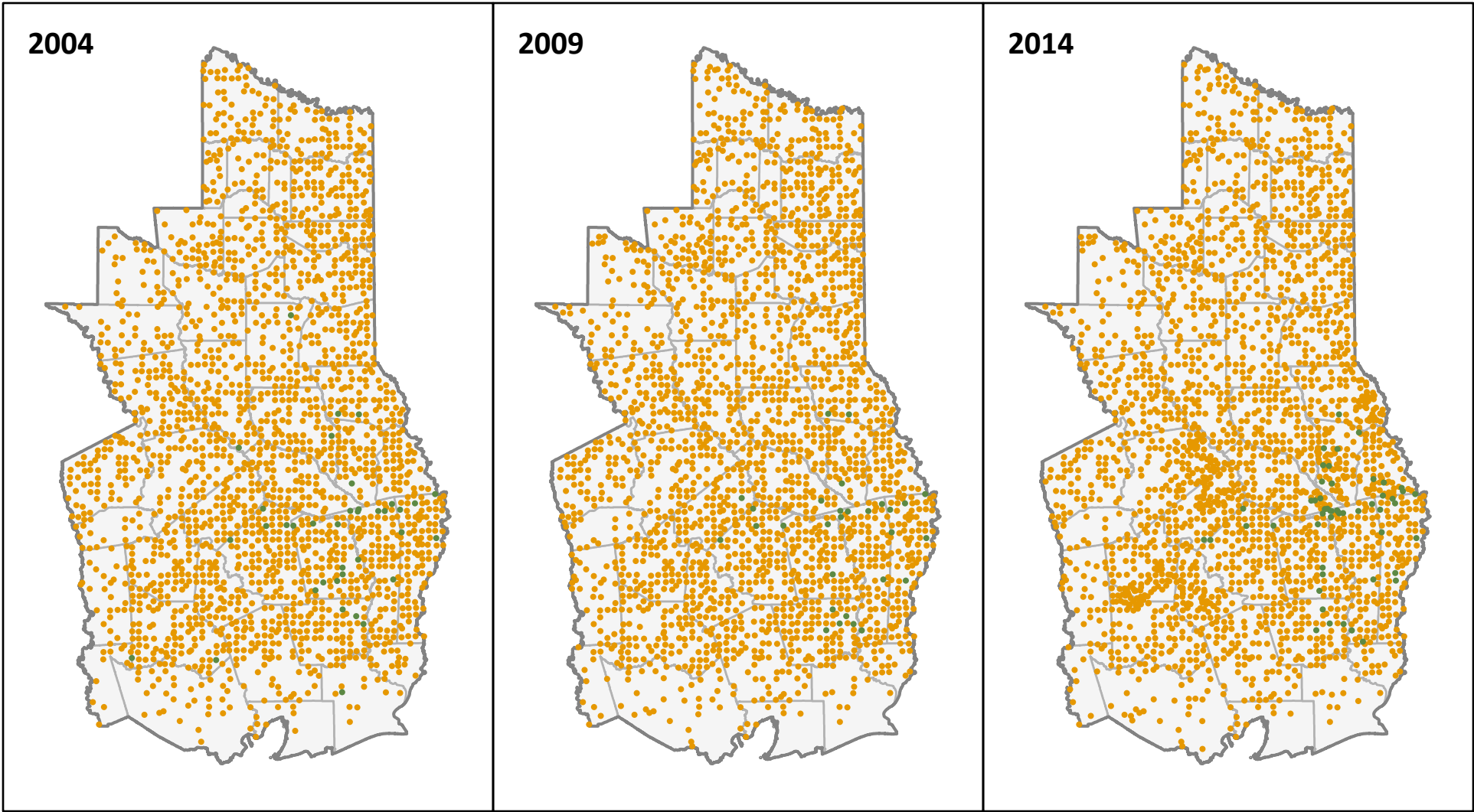
Data downloaded from FIA DataMart (<http://www.fia.fs.fed.us/tools-data>)  
 Downloaded on September 1, 2020



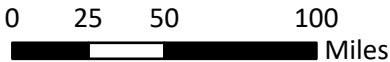
Map by Rebekah Zehnder (rzehnder@tfs.tamu.edu)  
 November 13, 2020



# Longleaf Pine in East Texas, 2004 to 2014



- longleaf pine trees absent
- longleaf pine trees present



FIA plots in East Texas from 2004, 2009, and 2014 inventories  
 Presence indicates at least one longleaf pine tree on timberland  
 Trees are at least 1 inch in diameter

Forest Inventory & Analysis is a state and federal partnership to inventory forestlands in Texas

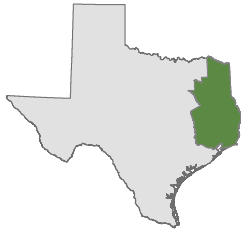
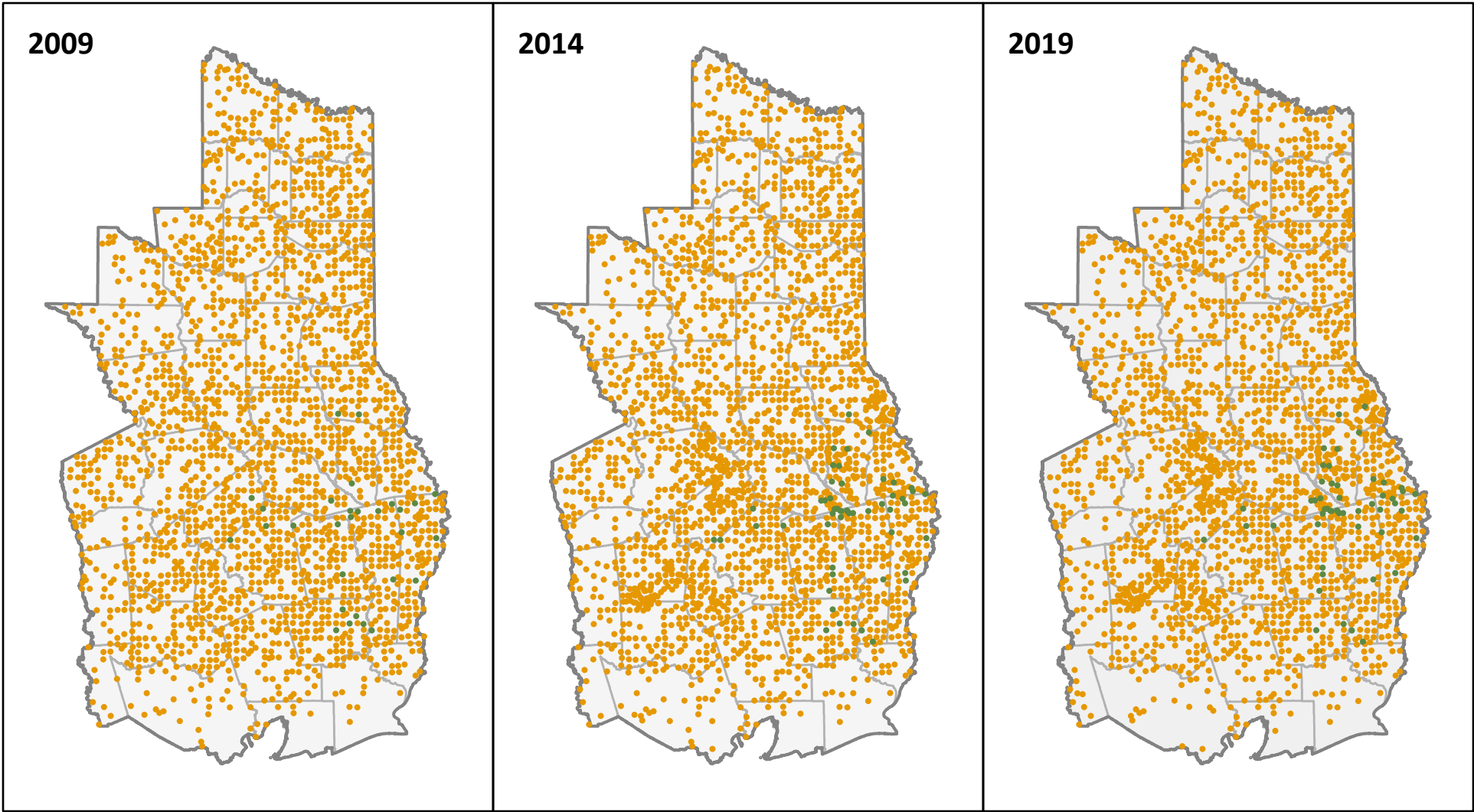
Data downloaded from FIA DataMart (<http://www.fia.fs.fed.us/tools-data>)  
 Downloaded on September 1, 2020



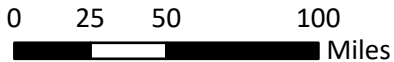
Map by Rebekah Zehnder  
 (rzehnder@tfs.tamu.edu)  
 November 13, 2020



# Longleaf Pine in East Texas, 2009 to 2019



- longleaf pine trees absent
- longleaf pine trees present



FIA plots in East Texas from 2009, 2014, and 2019 inventories  
 Presence indicates at least one longleaf pine tree on timberland  
 Trees are at least 1 inch in diameter

Forest Inventory & Analysis is a state and federal partnership to inventory forestlands in Texas

Data downloaded from FIA DataMart (<http://www.fia.fs.fed.us/tools-data>)  
 Downloaded on September 1, 2020



Map by Rebekah Zehnder (rzehnder@tfs.tamu.edu)  
 November 13, 2020

